

Alaska Department of Fish and Game

Habitat Section
Southeast Region



114-33-10230

CORRECTION

Water body name: Neka River

Survey date: 6/5/2022; 9/13/2022

Quad: Juneau A-6

Species & Lifestage: CHp,COp,Kp,Pp,Sp,DVp

Upper Reach Latitude: 58.114276 **Longitude:** -135.866706

Survey crew: DK, FC

Lower Reach Latitude: 58.052470 **Longitude:** -135.683542

Findings: We surveyed this cataloged stream using GPS and found that the stream path is incorrectly mapped. We observed juvenile coho salmon (Table 1; Figure 1).

Recommendations: Correct Stream No. 114-33-10230 in the anadromous waters catalog to reflect the field verified stream path, extending the downstream reach of stream into the intertidal (Figures 2, 3). Add rearing coho salmon to species. Renumber Streams No. 114-33-10130, 114-33-10190, 114-33-10210, 114-33-10250, 114-33-10270, and 114-33-10290 to clarify that they are tributaries of this stream, Neka River, the main channel draining into Neka Bay.

Nomination: Pending

Table 1.—114-33-10230 survey data.

Waypoint	Latitude	Longitude	Notes	Stream Width ft	Stream Substrate	Habitat Features	Gradient %	Sample Effort	Sample Results
443	58.077238	-135.825859	Neka bridge.						
446	58.089379	-135.847826	Neka bridge.						
1809	58.110013	-135.864366	Bridge over creek, overflow culvert on river-left. School of young-of-year coho in isolated pool near bridge.	40-50	Small Gravel Large Gravel	Spawning Substrate Log Jams	1-2	VI	25 CO



Figure 1.—Channel from bridge at waypoint 1809.

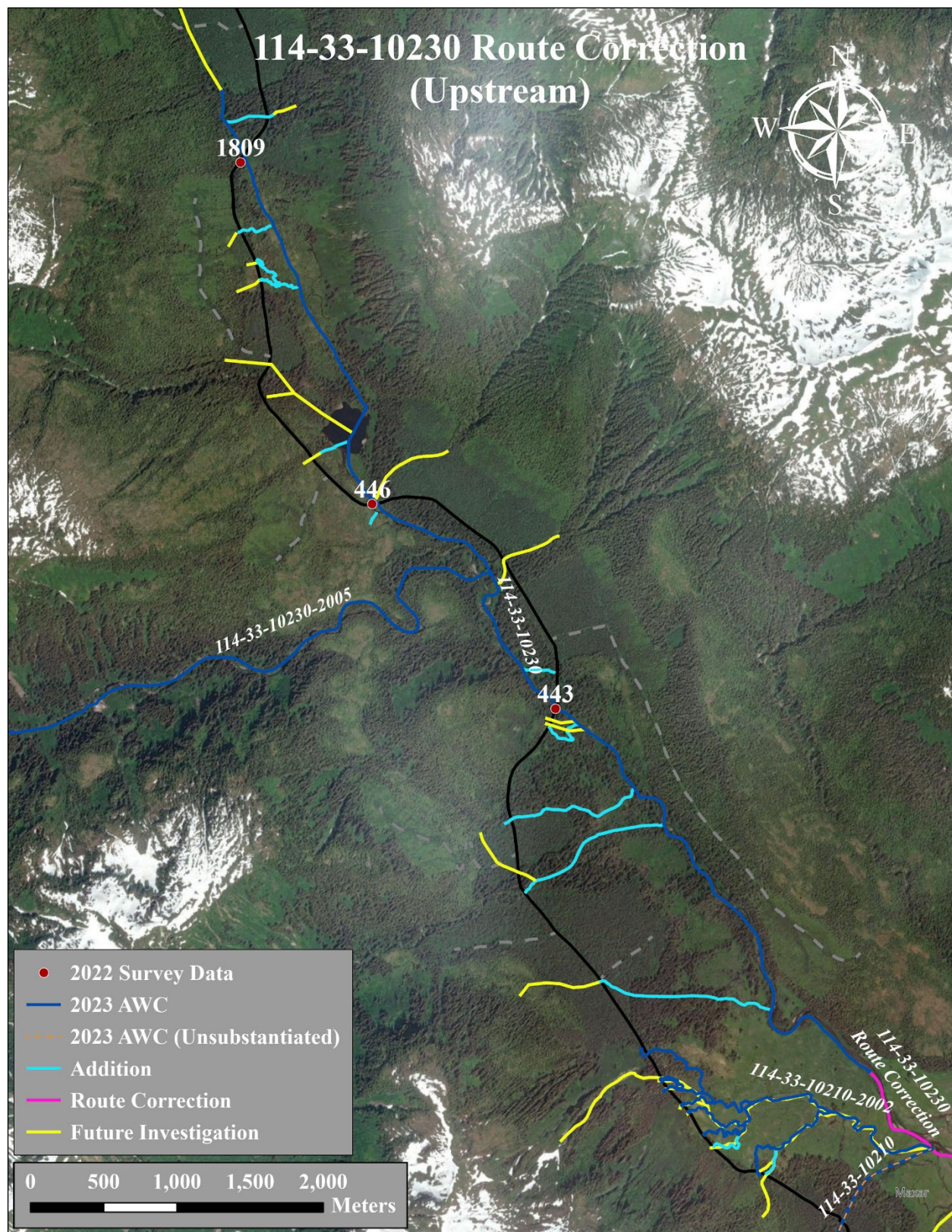


Figure 2.—114-33-10230 route correction (upstream) map.

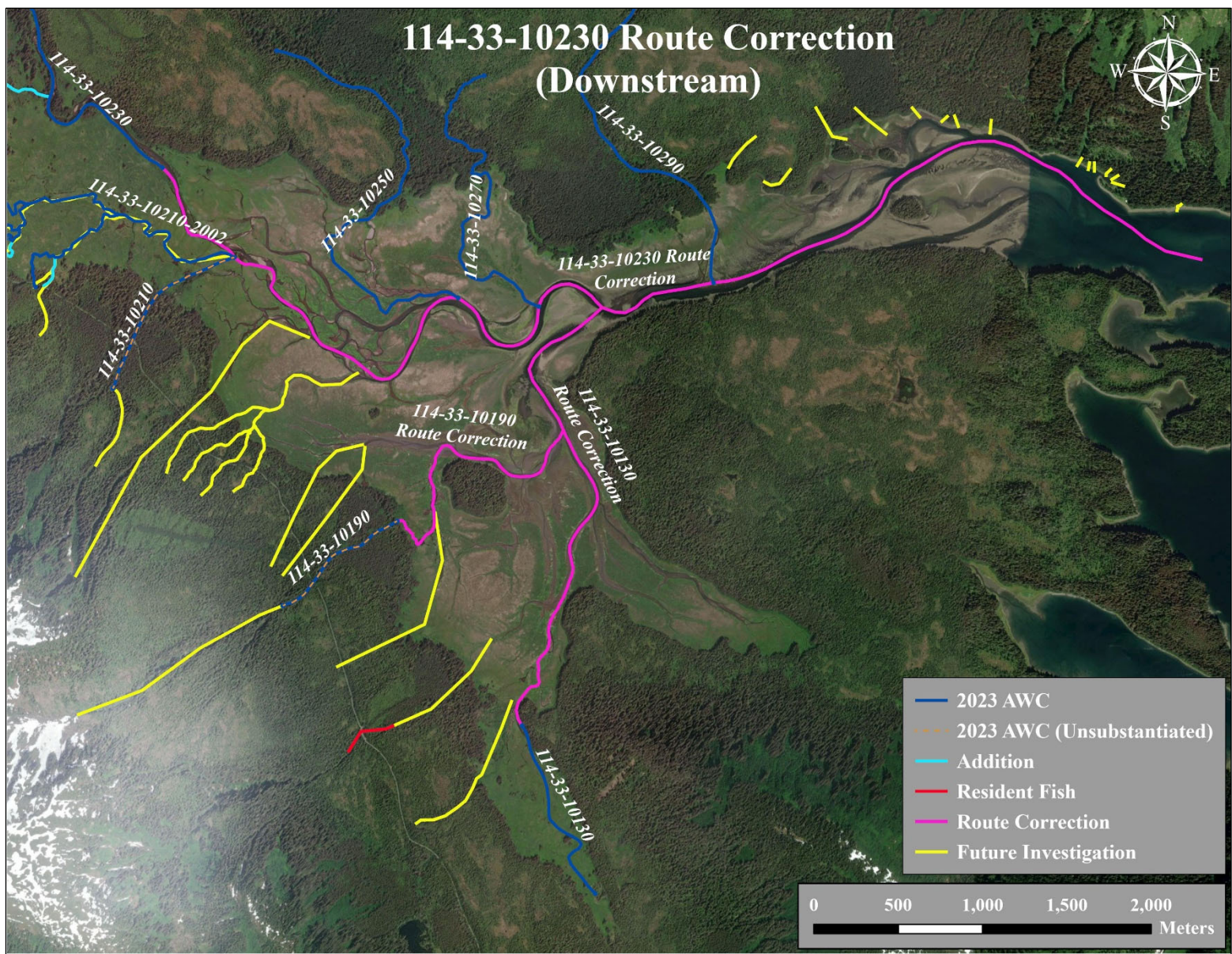


Figure 3.–114-33-10230 route correction (downstream) map.